

WORK LABS PROGRAMME

WHAT IS IT?

The Compliance Institute SA recognises the need expressed by individuals to gain more experience in compliance.

Whether you are curious about compliance, need work experience in certain aspects of compliance or want to start a career in compliance, these labs are tailored for you.

It is also for compliance managers who want to support their employees' personal development.

WHAT IS IT NOT?

The work labs alone will not provide you with sufficient experience for purposes of the Compliance Officer occupational qualification or the CPrac(SA) designation.



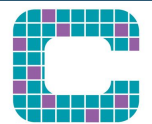
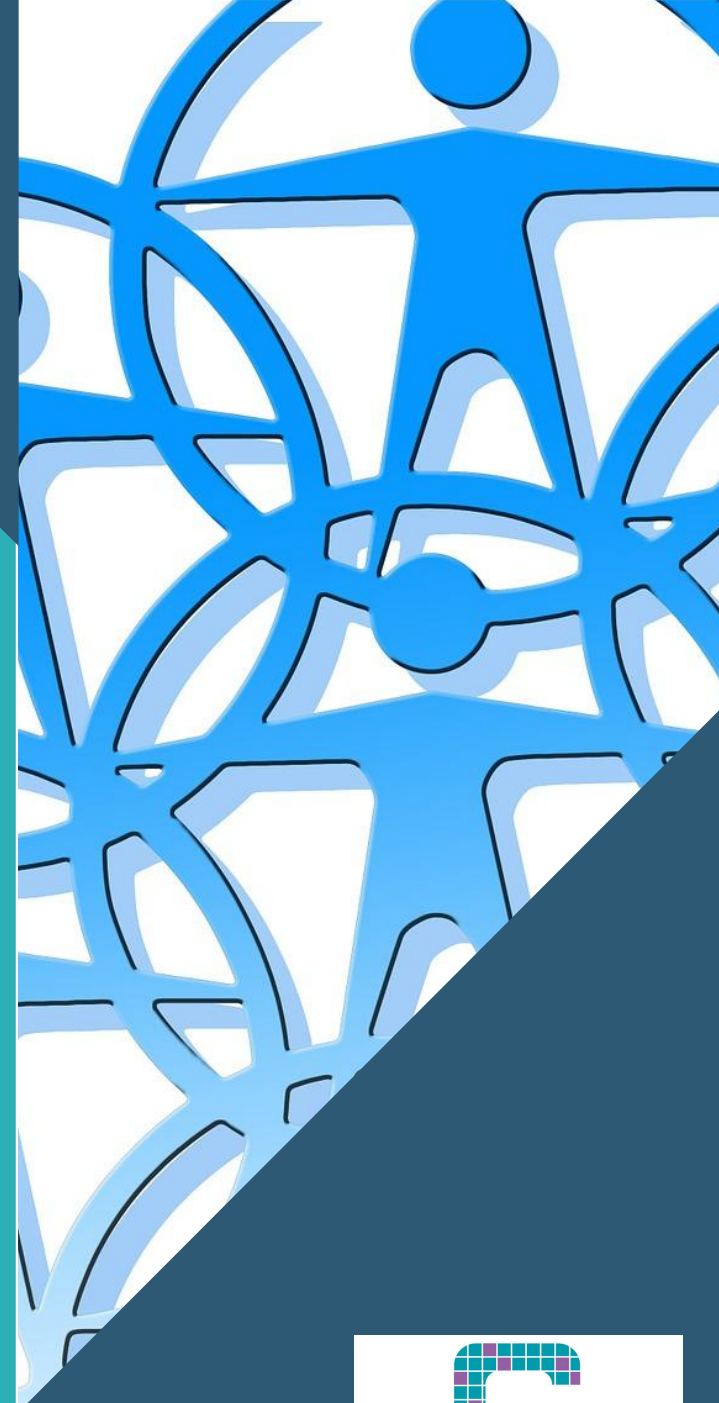
Grayston Ridge Office Park,
Block B, Lower Ground Floor
Office, 144 Katherine Street,
Sandton, Gauteng, 2146



+2711 642 7974



compliancea.com
worklabs@compliancea.com



COMPLIANCE
INSTITUTE
SOUTHERN AFRICA

**POSITIONING
YOU FOR THE
WORKPLACE**

WORK LABS BENEFITS

The labs follow the compliance phases described in our Generally Accepted Compliance Practice framework (GACP).

- Work Lab 1: Compliance Universe and Risk Profile
- Work Lab 2: Compliance Risk Management Plan (CRMP)
- Work Lab 3: Compliance Monitoring

You will be mentored by senior compliance officers. You are also likely to gain communication, facilitation, assertiveness, negotiation and Excel skills at the work labs.

At the end of each work lab, attendees will be assessed to evaluate their ability to produce the relevant compliance documents.

Successful attendees will receive a certificate for the specific work experience component and hours.

ENTRY REQUIREMENTS

For attendees to derive full benefit from these labs, they will need to have some background to compliance risk management theory or have been working in a compliance role. If you are not in a compliance role, or you have no knowledge or experience in compliance, it is a minimum requirement for you to attend the related training course(s) that corresponds to the specific work lab.

e.g. The Compliance Risk Management Plan (CRMP) course for the CRMP work lab.

Attendees must have their own laptop with Microsoft Excel and Word, e-mail, an Internet Browser and a stable internet connection to connect to the virtual classroom.

**POSITIONING
YOU FOR THE
WORKPLACE**



PRICING

Virtual class pricing is provided allowing you to make up the package that best suits your learning needs.

Refer to the pricing tables here, [click here](#).

TERMS AND CONDITIONS

Please review the [cancellation policy](#) and [finance policy](#).

HOW DO I BOOK?

Once you have decided that you are ready to attend the work labs, download the booking form below for your package choice, select your training dates on the form, then e-mail your form to worklabs@compliancesa.com.

Remember the cost of your package depends entirely on your unique needs. Great options available. [Booking form](#)

NEED ASSISTANCE?

If you require assistance or need more information, e-mail your request to worklabs@compliancesa.com.

**POSITIONING
YOU FOR THE
WORKPLACE**

