

## Western Cape

<b>Bellville</b>	Helpende Hande Versorgingsoord
<b>Bellville</b>	Tijger Clinic - Life Path group
<b>Bellville</b>	Mediclinic Louis Leipoldt
<b>Bishopscourt</b>	Akeso Montrose Manor Eating Disorder Treatment Centre
<b>Blaauwberg</b>	West Beach Clinic - Life Path group
<b>Bellville</b>	Melomed Bellville
<b>Brackenfell</b>	Mediclinic Cape Gate
<b>Cape Town</b>	Mediclinic Cape Town
<b>Cape Town</b>	Medicross Foreshore Day Hospital
<b>Century City</b>	Intercare Day Hospital Century City
<b>Durbanville</b>	Mediclinic Durbanville
<b>Durbanville</b>	Mediclinic Durbanville Day Clinic
<b>Foreshore</b>	Netcare Christiaan Barnard Memorial Hospital
<b>Gatesville</b>	Melomed Gatesville
<b>Goodwood</b>	Netcare N1 City Hospital
<b>Kraaifontein</b>	Kraaifontein Medical & Dental Centre
<b>Kuils River</b>	Netcare Kuils River Hospital
<b>Mitchells Plain</b>	Melomed Mitchells Plain
<b>Monte Vista</b>	Medicross Monte Vista Clinic
<b>Observatory</b>	Netcare UCT Private Academic Hospital
<b>Panorama</b>	Mediclinic Panorama
<b>Plumstead</b>	Mediclinic Constantiaberg
<b>Somerset West</b>	Mediclinic Vergelegen
<b>Stellenbosch</b>	Mediclinic Stellenbosch
<b>Stellenbosch</b>	Mediclinic Stellenbosch Day Clinic
<b>Stellenbosch</b>	Mediclinic Winelands Orthopaedic Hospital
<b>Sunningdale</b>	Netcare Blaauwberg Hospital
<b>Tokai</b>	Medicross Tokai Family Medical & Dental Centre
<b>Tokai</b>	Melomed Tokai
<b>Century City</b>	Oasis Care Centre
<b>Ceres</b>	Netcare Ceres Private Hospital
<b>Claremont</b>	Crescent Clinic
<b>Claremont</b>	Melomed Claremont Private Clinic
<b>Durbanville</b>	Durbanville Sleep Laboratory
<b>Durbanville</b>	M-Care Durbanville Wellness
<b>Durbanville</b>	Tygervalley Clinic
<b>Flamingo Vlei</b>	Palm Tree Clinic
<b>George</b>	Akeso Clinic George
<b>George</b>	George Surgical Centre
<b>George</b>	Groenkloof George Care Unit
<b>George</b>	Intercare George Sub-Acute Hospital
<b>George</b>	Mediclinic Geneva
<b>George</b>	Mediclinic George
<b>George</b>	Spescare George
<b>Goodwood</b>	Claro Clinic - Life Path Group
<b>Goodwood</b>	Nurture Cape View
<b>Hermanus</b>	Mediclinic Hermanus
<b>Hermanus</b>	Onrus Manor Health Care Centre
<b>Hermanus</b>	Spescare Hermanus
<b>Hout Bay</b>	Nurture Harmony Substance Abuse Clinic
<b>Kenilworth</b>	Akeso Kenilworth Clinic - Kaya
<b>Kenilworth</b>	Akeso Kenilworth Clinic
<b>Khayelitsha</b>	Thembari Theatres
<b>Kirstenhof</b>	Faircape Health t/a Cle Du Cap
<b>Kleinmond</b>	Kogelpark Clinic

<b>Kommetjie</b>	Stepping Stones Clinic
<b>Langebaan</b>	Gerimed Langebaan
<b>Melkbosstrand</b>	Sea Park Nursing Care
<b>Milnerton</b>	Akeso Specialised Psychiatric Clinic Milnerton
<b>Milnerton</b>	Mediclinic Milnerton
<b>Mossel Bay</b>	Life Bay View Private Hospital
<b>Mossel Bay</b>	Vidamed Day Hospital (Pty) Ltd
<b>Mossel Bay</b>	Vidamed Sub-Acute Hospital
<b>Newlands</b>	Nurture Newlands
<b>Noordhoek</b>	Noordhoek Manor
<b>Oudtshoorn</b>	Mediclinic Klein Karoo
<b>Paarl</b>	Care Cure Paarl
<b>Paarl</b>	De Oude Renbaan
<b>Paarl</b>	Mediclinic Paarl
<b>Paarl</b>	Sereno Clinic - Life Path Group
<b>Paarl</b>	Spescare Paarl
<b>Pinelands</b>	Life Vincent Pallotti - Rehabilitation Centre
<b>Pinelands</b>	Robin Trust
<b>Pinelands</b>	Robin Trust
<b>Plettenberg Bay</b>	Mediclinic Plettenberg Bay
<b>Rondebosch</b>	Summit Clinic
<b>Somerset West</b>	Bridgewater Manor Private Healthcare Centre T/A Faircare Trust
<b>Somerset West</b>	Busamed Paardevlei
<b>Somerset West</b>	Helderberg Village Healthcare
<b>Somerset West</b>	Heritage Manor
<b>Somerset West</b>	Rustenburg Addiction Care
<b>Stellenbosch</b>	La Clemence Health Care Centre
<b>Somerset West</b>	M-Care Optima@Rustenvrede
<b>Stellenbosch</b>	Spescare Stellenbosch
<b>Stellenbosch</b>	Carewell Sub-Acute
<b>Stilbaai</b>	Helderberg Clinic (Life Path Group)
<b>Strand</b>	Faircape Health Tokai
<b>Tokai</b>	Intercare Sub-Acute Tygervalley
<b>Tygervalley</b>	Cape Gate Neuro Clinic
<b>Vredelokloof</b>	Life West Coast Private Hospital
<b>Vredenburg</b>	Bonheur Sub-Acute Centre
<b>Welgelegen</b>	Advanced Worcester Surgical Centre
<b>Worcester</b>	Mediclinic Worcester
<b>Worcester</b>	Pines Clinic - Life Path Group
<b>Wynberg</b>	Gardens Neuro Clinic



## Eastern Cape

<b>Beacon Bay</b>	Life Beacon Bay Hospital
<b>Berea</b>	Lily Kirchmann Home - Sub-Acute Unit
<b>East London</b>	Life East London Private Hospital
<b>East London</b>	Life East London Private Hospital Sub-Acute
<b>East London</b>	Life Health St Dominic's Sub-Acute
<b>Southernwood</b>	East London Eye Hospital (Pty) Ltd
<b>Southernwood</b>	Life St Dominic's Hospital
<b>Southernwood</b>	Life St James Hospital
<b>Southernwood</b>	Metro Maternity Home
<b>Vincent</b>	Primed Sub-Acute Facility (East London)
<b>Gonubie</b>	The Golden Mile
<b>Humansdorp</b>	Life Isivivana Private Hospital
<b>Jeffreys Bay</b>	Amala Nursing Home
<b>Jeffreys Bay</b>	Eedenglen Frail Care Facility
<b>Jeffreys Bay</b>	Jeffmed
<b>Matatiele</b>	Matatiele Private Hospital
<b>Mthatha</b>	Dr Mashiyi Step Down Facility aka Mthatha Sub Acute
<b>Mthatha</b>	Life St Mary's Private Hospital
<b>Mthatha</b>	Mthatha Private Hospital
<b>Newton Park</b>	Primed Sub-Acute Facility (Port Elizabeth)
<b>Greenacres</b>	Netcare Greenacres Hospital (Pty) Ltd
<b>Port Elizabeth</b>	Life Huntersraig Hospital
<b>Port Elizabeth</b>	Nurture Sunnyside Hospital
<b>Mill Park</b>	Medical Forum Theatre
<b>Queenstown</b>	Life Queenstown Private Hospital
<b>Somerset East</b>	Tromed Sub-Acute Facility
<b>Southernwood</b>	Life St Dominic's Hospital - Rehabilitation Unit
<b>Southernwood</b>	Life St Mark's Hospital
<b>Uitenhage</b>	Netcare Cuyler Hospital
<b>Walmer Downs</b>	Aurora Acute Rehab Hospital
<b>Westbourne</b>	Care Cure Queenstown



**Tanzanite One and EVO continue to give you more in 2021!**

## Northern Cape

<b>Hartswater</b>	Jane Keyser Clinic
<b>Hartswater</b>	Medi-Harts Day Clinic
<b>Kathu</b>	Lenmed Health Kathu Private Hospital
<b>Kimberley</b>	Andalusia Clinic
<b>Kimberley</b>	Careline Clinic
<b>Kimberley</b>	Kim-Med Mental Health Institute
<b>Kimberley</b>	Kim-Med Private Hospital
<b>Kimberley</b>	Mediclinic Gariep
<b>Kimberley</b>	Mediclinic Kimberley
<b>Kimberley</b>	Medicross Narko Clinic (Pty) Ltd
<b>Royldene</b>	Lenmed Royal Hospital and Heart Centre
<b>Upington</b>	Mediclinic Upington
<b>Upington</b>	Kalahari Cataract Eye and Day Theatre

## North West

<b>Brits</b>	Mediclinic Brits
<b>Hartebeespoort</b>	Beethoven Recovery Centre
<b>Klerksdorp</b>	Parkmed Neuro Clinic
<b>Klerksdorp</b>	Sunningdale Hospital
<b>Klerksdorp</b>	Wilmed Park Private Hospital
<b>Wilkoppies</b>	Life Anncron Hospital
<b>Mafikeng</b>	Clinix Itokolle-Victoria Private Hospital
<b>Mmabatho</b>	Kgatelopele Wellness Centre
<b>Potchefstroom</b>	M-Care Potchefstroom
<b>Potchefstroom</b>	Mediclinic Potchefstroom
<b>Potchefstroom</b>	Potchefstroom Medical & Dental Centre
<b>Tlhabane</b>	Netcare Ferncrest Hospital
<b>Vryburg</b>	RH Vryburg Private Hospital



**PLEASE NOTE:** If you are a **Tanzanite One** and **EVO** member, you must use one of the hospitals in the **GEMS Hospital Network**, as listed in this brochure. However, the list is continually being updated so please be sure to check our website at [www.gems.gov.za](http://www.gems.gov.za) on a regular basis to view the latest list or call our contact centre on **0860 00 4367**.



## 2021 GEMS Hospital Network List



**DISCOVER** the **BRILLIANCE** of **GEMS**

This is a comprehensive list of all the hospitals on the GEMS Hospital Network. Please review the list when choosing the Tanzanite One or Emerald Value Option to ensure there is a GEMS network hospital in your area.

## Gauteng

<b>Karenpark</b>	Netcare Akasia Hospital
<b>Alberton</b>	Akeso Clinic Alberton
<b>Alberton</b>	Life Brackenview Hospital
<b>Alberton</b>	Netcare Union Hospital
<b>New Redruth</b>	Netcare Clinton Hospital
<b>Arcadia</b>	Akeso Clinic Arcadia
<b>Auckland Park</b>	Netcare Rehabilitation Hospital
<b>Benoni</b>	Life Glynnview Hospital
<b>Benoni</b>	Netcare Lakeview Hospital
<b>Lakefield</b>	Lakefield Surgical Centre (Pty) Ltd
<b>Lakefield</b>	Netcare Optiklin Eye Hospital
<b>Rynfield</b>	Netcare Linmed Hospital
<b>Bardene</b>	Boksburg Medical & Dental Centre (Theatre)
<b>Sunward Park</b>	Netcare Sunward Park Hospital
<b>Bryanston</b>	Bryanston Sub-Acute (Pty) Ltd
<b>Sandton</b>	Intercare Medfem Fertility Clinic
<b>Carletonville</b>	The Fountain Private Hospital
<b>Centurion</b>	Vista Private Psychiatric Clinic
<b>Irene</b>	Intercare Day Hospital Irene
<b>Lyttelton Manor</b>	Netcare Unitas Hospital
<b>Diepkloof Zone 6</b>	Clinix Dr S K Maseke Memorial Hospital
<b>Eloffsdal</b>	Mothwa Med-Step Clinic
<b>Erasmuskloof</b>	Mediclinic Kloof
<b>Faerie Glen</b>	Mooigeleë Clinic
<b>Ferndale</b>	Papillon Psychiatric Recovery Centre
<b>Florida Park</b>	Sr. Lea Sub-Acute Florida
<b>Fochville</b>	Fochville Hospital
<b>Lambton</b>	Germiston Medical & Dental Centre
<b>Irene</b>	Intercare Sub-Acute & Rehabilitation Hospital Irene
<b>Johannesburg</b>	Circlehealth Care
<b>Johannesburg</b>	Clayton House
<b>Johannesburg</b>	Talisman Foundation
<b>Linksfield West</b>	Netcare Linksfield Hospital
<b>Linksfield West</b>	Netcare Linkwood Hospital
<b>Mayfair West</b>	Netcare Garden City Hospital
<b>Mulbarton</b>	Netcare Mulbarton Hospital
<b>Parktown</b>	Nelson Mandela Children's Hospital
<b>Parktown</b>	Netcare Park Lane Hospital
<b>Parktown</b>	Wits Donald Gordon Medical Centre
<b>Parktown West</b>	Netcare Milpark Hospital
<b>Rosebank</b>	Netcare Rosebank Hospital
<b>Selby</b>	Clinix Selby Park Hospital (Solomon Stix Morewa Hospital)
<b>Waverly</b>	Centre of Advanced Medicine (Dexenet)
<b>Kensington</b>	Life New Kensington - Rehabilitation Unit
<b>Kensington</b>	New Kensington Clinic
<b>Krugersdorp</b>	Execu-Med Sub-Acute
<b>Krugersdorp</b>	Netcare Krugersdorp Hospital
<b>Pine Haven</b>	Netcare Pinehaven Hospital
<b>Lenasia Ext 8</b>	Lenmed Health Ahmed Kathrada Private Hospital
<b>Lenasia South</b>	Lenmed Daxina Private Hospital
<b>Les Marais</b>	Life Eugene Marais - Rehabilitation Unit
<b>Mabopane</b>	Mediclinic Legae
<b>Ebony Park</b>	Medicure24 - Maternity Unit
<b>Midrand</b>	Netcare Waterfall City Hospital
<b>Midstream</b>	Care@Midstream

<b>Midstream</b>	Mediclinic Midstream
<b>Montana</b>	Montamed Sorgsentrum & Sub-Akuut
<b>Northcliff</b>	Northcliff Medwedge Sub-Acuut
<b>Northmead</b>	Rynmed Sub-Acute Clinic
<b>Parktown</b>	Akeso Clinic Parktown
<b>Arcadia</b>	Mediclinic Heart Hospital
<b>Arcadia</b>	Mediclinic Muelmed
<b>Arcadia</b>	Netcare Femina Hospital
<b>Arcadia</b>	Pretoria Eye Hospital
<b>Constantia Park</b>	Constantia Park Medical & Dental Centre Silverton
<b>Daspoort</b>	Netcare Bougainville Private Hospital
<b>Garsfontein</b>	Denmar Specialist Psychiatric Facility
<b>Groenkloof</b>	Groenkloof Healthcare Facility
<b>Montanapark</b>	Netcare Montana Private Hospital
<b>Moreletapark</b>	Netcare Pretoria East Hospital
<b>Muckleneuk</b>	Netcare Jakaranda Hospital
<b>Pretoria</b>	Fisha Wellness Centre
<b>Pretoria</b>	Ozoflex Rehabilitation Centre
<b>Queenswood</b>	Herfsmed Clinic
<b>Rietfontein</b>	Netcare Moot General Hospital
<b>Silver Lakes</b>	Intercare Day Hospital Hazeldean
<b>Silverton</b>	Medicross Silverton Medical & Dental Centre (Theatre)
<b>Sunnyside</b>	Mediclinic Gynaecological
<b>Sunnyside</b>	Mediclinic Medforum
<b>Bergbron</b>	The Berg Medicross Medical & Dental Centre
<b>Olivedale</b>	Netcare Olivedale Hospital
<b>Randburg</b>	Akeso Crescent Clinic
<b>Randburg</b>	Life Riverfield Lodge
<b>Randburg</b>	Life Riverfield Lodge Rehab
<b>Greenhills</b>	Lenmed Randfontein Private Hospital
<b>Florida Park</b>	Netcare Constantia Clinic
<b>Roodepoort</b>	Life Poortview Hospital
<b>Rynfield</b>	Morehill Clinic (Pty) Ltd
<b>Bryanston</b>	Mediclinic Sandton
<b>Limbro Park</b>	Busamed Modderfontein Private Hospital
<b>Morningside</b>	Intercare Day Hospital Sandton (Sandton Surgical Centre)
<b>Morningside</b>	Mediclinic Morningside
<b>Sandton</b>	Sandton Sub-Acute Hospital (Pty) Ltd
<b>Sunninghill</b>	Netcare Sunninghill Hospital
<b>Sebokeng</b>	Clinix Naledi-Nkanyezi Private Hospital
<b>Silver Lakes</b>	Intercare Sub-Acute Hospital Hazeldean (Pty) Ltd
<b>Soshanguve</b>	Botshilu Private Hospital
<b>Dobsonville</b>	Clinix Tshupo - Themba Private Hospital
<b>Protea Glen</b>	Advanced Soweto Day Hospital
<b>Pollak Park</b>	Netcare N17 Private Hospital (Pty) Ltd
<b>Sunnyside</b>	Mediclinic Meulmed
<b>Hospital View</b>	Lenmed Health Zamokuhle Private Hospital
<b>Three Rivers</b>	Trimed Medical Centre
<b>Vanderbijl Park</b>	Mediclinic Emfuleni
<b>Vereeniging</b>	Care Cure Vereeniging Sub-Acute
<b>Vereeniging</b>	Mediclinic Vereeniging
<b>Vosloorus Ext 9</b>	Clinix Botshelong - Empilweni Private Hospital
<b>Zwavel Poort</b>	ZwavelStream Clinic

## KwaZulu-Natal

<b>Amanzimtoti</b>	Netcare Kingsway Hospital
<b>Ballito</b>	Nurture Ilembe Wellness Centre
<b>Bulwer</b>	Netcare St Augustine's Hospital
<b>Sydenham</b>	Lenmed Shifa Private Hospital
<b>Bluff</b>	Bluff Medical & Dental Centre
<b>Chatsworth</b>	Chatsworth Cheshire Rehabilitation Centre
<b>Ballito</b>	Netcare Alberlito Hospital
<b>Dundee</b>	Talana Stepdown Facility
<b>Assegay</b>	Busamed Hillcrest Private Hospital
<b>Durban</b>	Durdoc Sanctuary Hospital
<b>Durban</b>	Ethekwini Hospital and Heart Centre
<b>Durban</b>	Highway Sub-Acute (Pty) Ltd
<b>Durban</b>	Life Entabeni - Rehabilitation Unit
<b>Durban</b>	Pro Care Nursing Services (Sub-Acute)
<b>Overport</b>	Durban Eye Hospital
<b>Overport</b>	Netcare Parklands Hospital
<b>Stanger</b>	Kwa Dukuzza Private Hospital
<b>Hilton</b>	Life Hilton Private Hospital
<b>Howick</b>	Mediclinic Howick
<b>Howick</b>	Oatlands Care Centre
<b>Kokstad</b>	Kokstad Private Hospital
<b>Ladysmith</b>	Ladysmith Day Hospital
<b>Ladysmith</b>	Ladysmith Sub-Acute Hospital / Essen Medical Centre
<b>Ladysmith</b>	Lenmed La Verna Hospital
<b>Margate</b>	Netcare Margate Hospital
<b>Shelly Beach</b>	Shelly Beach Day Hospital
<b>Shelly Beach</b>	Shelly Beach Private Hospital
<b>Shelly Beach</b>	Shelly Beach Sub-Acute Hospital
<b>Newcastle</b>	Mediclinic Newcastle
<b>Newcastle</b>	Mediclinic Newcastle Day Hospital
<b>Overport</b>	Humana Healthcare
<b>Pietermaritzburg</b>	Akeso Clinic Pietermaritzburg
<b>Pietermaritzburg</b>	Daymed Private Hospital
<b>Pietermaritzburg</b>	Mediclinic Pietermaritzburg
<b>Pietermaritzburg</b>	Netcare St Anne's Hospital
<b>Pietermaritzburg</b>	Royal Rehabilitation Hospital (Pty) Ltd T/A Royal Hospital
<b>Pietermaritzburg</b>	St Mary's Step-Down
<b>Pietermaritzburg</b>	Wembley House
<b>Pietermaritzburg</b>	Pietermaritzburg Eye Hospital
<b>Pinetown</b>	Medicross Pinetown Medical & Dental Centre (Theatre)
<b>Richards Bay</b>	Medicross Richards Bay Day Theatre
<b>Richards Bay</b>	Melomed Richards Bay
<b>Richards Bay</b>	Netcare The Bay Hospital
<b>Richards Bay</b>	Richards Bay Medical Institute
<b>Tongaat</b>	Mediclinic Victoria
<b>Umhlanga</b>	Akeso Umhlanga
<b>Umhlanga</b>	M-Care Umhlanga
<b>Umhlanga</b>	Umhlanga Eye Institute
<b>Umhlanga Rocks</b>	Busamed Gateway Private Hospital
<b>Umhlanga Rocks</b>	Netcare Umhlanga Hospital
<b>Underberg</b>	Riverview Manor
<b>Vryheid</b>	Abaqulusi Private Hospital

## Free State

<b>Bayswater</b>	Bayswater Care
<b>Bethlehem</b>	Bethlehem Medical Centre
<b>Bethlehem</b>	Corona Sub-Acute Hospital
<b>Bethlehem</b>	Mediclinic Hoogland
<b>Bloemfontein</b>	Busamed Bram Fischer International Hospital
<b>Bloemfontein</b>	Life Pasteur Hospital Afrox Rehab Riemland
<b>Bloemfontein</b>	Life Pasteur Hospital Private Subacute
<b>Bloemfontein</b>	M-Care Optima (Bloempsych )
<b>Bloemfontein</b>	Nurture Victoria Gardens Wellness Life Pasteur
<b>Fichardt Park</b>	Life Rosepark Hospital
<b>Heidedal</b>	Netcare Pelonomi Private Hospital
<b>Hospitaalpark</b>	Pasteur Eye Hospital (previously Horizon Eye)
<b>Universitas</b>	Universitas Private Hospital
<b>Westdene</b>	Mediclinic Bloemfontein
<b>Frankfort</b>	Riemland Kliniek
<b>Groenvlei</b>	Hillandale Acute Rehabilitation Nurture
<b>Groenvlei</b>	Hillandale Health Care Centre
<b>Groenvlei</b>	Nurture Woodlands
<b>Harrismith</b>	Busamed Harrismith Private Hospital
<b>Kroonstad</b>	Netcare Kroon Hospital
<b>Langenhoven Park</b>	Bloemcare Psychiatric Hospital
<b>Vaalpark</b>	Netcare Vaalpark Hospital
<b>St Helena</b>	Welkom Medical Centre
<b>Welkom</b>	Mediclinic Welkom
<b>Welkom</b>	RH Matjhabeng Private Hospital
<b>Welkom</b>	Welkom Sub-Acute Hospital
<b>Willows</b>	Care Cure Victoria Gardens

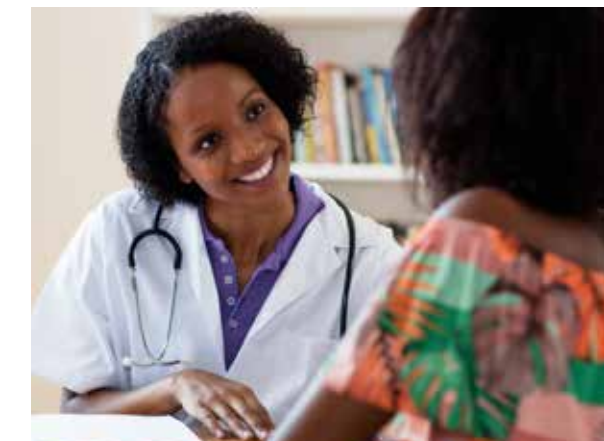
## Limpopo

<b>Bela Bela</b>	St Vincent's Hospital
<b>Lebowakgomo</b>	Medleb Private Hospital
<b>Lephalale</b>	Mediclinic Lephalale
<b>Louis Trichardt</b>	Quality Care Private Hospital
<b>Louis Trichardt</b>	Zoutpansberg Private Hospital
<b>Pietersburg North</b>	Mediclinic Limpopo
<b>Polokwane</b>	Mediclinic Limpopo Day Hospital
<b>Polokwane</b>	Netcare Pholoso Hospital
<b>Polokwane</b>	Unicare
<b>Thabazimbi</b>	Mediclinic Thabazimbi
<b>Tzaneen</b>	Mediclinic Tzaneen



## Mpumalanga

<b>Barberton</b>	RH Phodclinic
<b>Die Heuwel</b>	Advanced Health De La Vie Day Hospital
<b>Emalahleni</b>	Advanced Emalahleni Day Hospital (E D H)
<b>eMalahleni</b>	M-Care Highveldt
<b>Witbank</b>	Emalahleni Private Hospital
<b>Witbank</b>	Life Cosmos Hospital
<b>Ermelo</b>	Mediclinic Ermelo
<b>Middelburg</b>	Life Midmed Hospital
<b>Nelspruit</b>	Akeso Clinic Nelspruit
<b>Nelspruit</b>	Busamed Lowveld Private Hospital
<b>Nelspruit</b>	M-Care Nelspruit
<b>Nelspruit</b>	Mediclinic Nelspruit Day Clinic
<b>Nelspruit</b>	Mediclinic Nelspruit
<b>Secunda</b>	Mediclinic Secunda
<b>Secunda</b>	RH Piet Retief Private Hospital
<b>Standerton</b>	Mar-Peh Medicare
<b>Trichardt</b>	Mediclinic Highveld



The digital membership card is available on the **GEMS Member app** and is convenient for members and their beneficiaries. Make use of the multi-function **GEMS Member App** to interact with the Scheme from home or on the go to make your life easier.

**Use the QR code to download the GEMS Member app.**